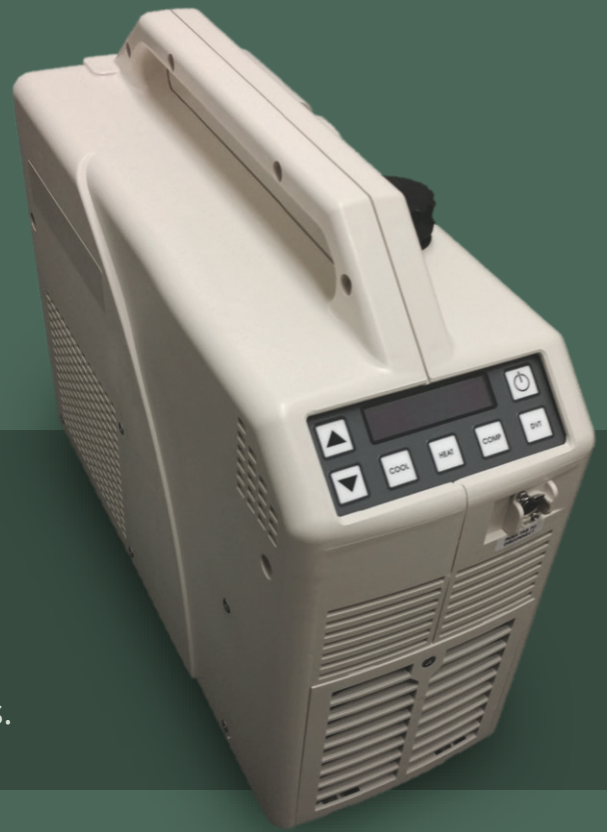


# OrthoSave®

C O M P

## PNEUMATIC COMPRESSION FOR POST-SURGICAL RECOVERY

The OrthoSave® System is a combination of advanced medical devices for orthopaedic rehabilitation and Reveille's unique on base or at residence, best-in-class service. The OrthoSave® System provides a vastly superior alternative to traditional compression therapies.



## PHYSICIAN BENEFITS

### IMPROVED OUTCOMES

Studies have shown that this pneumatic compression (with detachable DVT) approach to rehabilitation results in improved post-operative range of motion as well as reduction in pain and healing time.

### COMPREHENSIVE SERVICE

Our best-in-class service providers deliver or ship (per surgeon protocols) right to military personnel residences, train military patients in the proper prescribed use of therapies, and offer support 7 days a week during the course of treatment, while taking care of insurance claims on their behalf.

### MEASURED COMPLIANCE

The Comp unit digitally records patient therapy usage, a key factor in determining the next phase of patient recovery management.

### IMPROVED COMPLIANCE

Other ways to reduce swelling are a hassle and produce varying degrees of results. The convenience of OrthoSave® Comp means patients are more likely to comply with the therapy prescription.

## PATIENT BENEFITS

### REDUCED PAIN WITH LESS MEDICATION

Patients regularly experience less pain due to treatment at the wound site in compliance with OrthoSave® Comp therapy, resulting in less reliance on oral medication.

### IMPROVED SAFETY

The OrthoSave® Comp offers precise control of therapy settings to prevent tissue damage that can be caused by other less-advanced therapies.

### COVERAGE

Reveille therapies are covered benefits as per Tricare Online Manual Chapter 4 Section 6.1 Musculoskeletal System. There is no cost to active duty personnel as per DOD regulations. This allows us to ship our best-in-class directly to your patients' homes at no cost to them.



# OrthoSave®

C O M P

OrthoSave® Comp offers a wide range of compression therapy settings for patient recovery and rehabilitation. The OrthoSave® Comp unit features advanced safety programming to ensure the therapy is compliant with the physician's prescription.

## BENEFITS

- Reduces edema from soft tissue injury
- Provides programmable intermittent pressure
- Drives therapy for optimal recovery
- Enables prescription controlled pain management with fewer narcotics
- Measures compliance to the physician's prescription
- Improves safety through state-of-the-art therapy system



## REVEILLE DME

200 Continental Dr., Suite 401, PMB 928  
Newark, DE 19713  
Toll Free: 800-780-2140  
[info@reveilledme.com](mailto:info@reveilledme.com)  
[www.reveilledme.com](http://www.reveilledme.com)